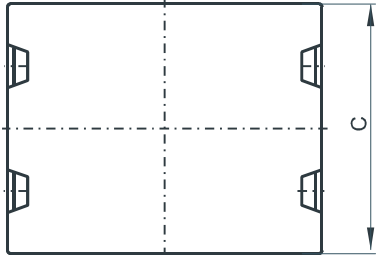
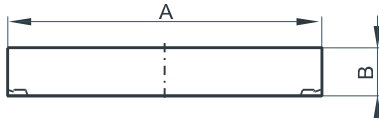


DIMENSIONS



(mm)	Nominal:	Tol. min.:	Tol. max.:
A	64.01	-1.27	+ 1.27
B	5.08	-0.13	+ 0.13
C	50.8	-1.02	+ 1.02
Eff. Parameters (with C_46410EC)			
Ae mm²	Amin mm²	le mm	Ve mm³
511.0	511.0	69.9	35539

INDUCTANCE

MARKING

AL value (nH/T²)	Test conditions (with CR46410EC)	CR46410IC PXXXXX
Nom: 16139 Min.: 12104	10 kHz, < 0.5 mT, 25 °C	

CORE LOSSES

P_i max	Test conditions
< 3.2 W/set (< 89 mW/cm ³)	100 kHz, 100 mT, 100 °C
< 23 W/set (< 637 mW/cm ³)	100 kHz, 200 mT, 100 °C

NOTE

Spec. modifications	Previous	Revised
2005-06-22	A=64.0±0.76 AL=12800 Min. AL=17067 Nom. C=50.8±0.81 Losses: General R material	A=64.01±1.27 AL=12104 Min. AL=16139 Nom. C=50.8±1.02 Losses: Detail as indicated