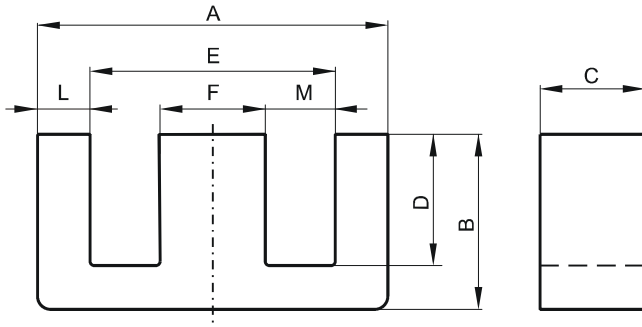


**DIMENSIONS**



(mm)	Nominal:	Tol. min.:	Tol. max.:
<b>A</b>	25.4	-0.38	+ 0.38
<b>B</b>	15.9	-0.25	+ 0.25
<b>C</b>	12.7	-0.25	+ 0.25
<b>D</b>	12.6 Min.		
<b>E</b>	18.8 Min.		
<b>F</b>	6.35	-0.13	+ 0.13
<b>L</b>	3.12	-0.13	+ 0.13
<b>M</b>	6.4	-0.25	+ 0.25
Eff. Parameters			
<b>Ae mm<sup>2</sup></b>	<b>Amin mm<sup>2</sup></b>	<b>le mm</b>	<b>Ve mm<sup>3</sup></b>
80.2	79.4	73.5	5900

**INDUCTANCE**

**MARKING**

AL value (nH/T <sup>2</sup> )	Test conditions	No marking
1070 ± 25%	10 kHz, < 0.5 mT, 25 °C	

**CORE LOSSES**

P <sub>i</sub> max	Test conditions
< 1.3 W/set (< 220 mW/cm <sup>3</sup> )	1000 kHz, 30 mT, 100 °C
< 2.4 W/set (< 407 mW/cm <sup>3</sup> )	3000 kHz, 10 mT, 100 °C