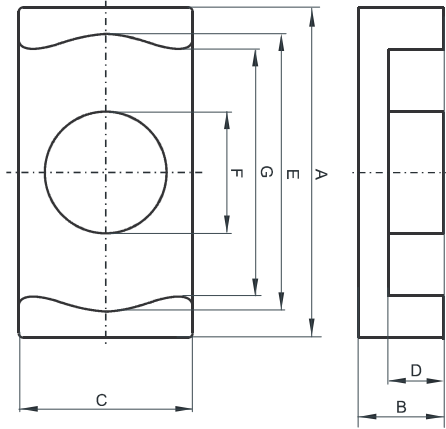


DIMENSIONS



(mm)	Nominal:	Tol. min.:	Tol. max.:
A	25.0	-0.4	+ 0.4
B	5.6	-0.1	+ 0.1
C	18.0	-0.3	+ 0.3
D	2.75	-0.15	+ 0.15
E	22.0	-0.4	+ 0.4
F	11.0	-0.2	+ 0.2
G	15.2	-0.7	+ 0.7
Eff. Parameters			
Ae mm²	Amin mm²	le mm	Ve mm³
91.8	86.4	33.8	3100

INDUCTANCE

AL value (nH/T ²)	Test conditions
2650 ± 25%	10 kHz, < 0.5 mT, 25 °C

MARKING

OLEC 42517

CORE LOSSES

P _i max	Test conditions
< 0.69 W/set (< 224 mW/cm ³)	1000 kHz, 30 mT, 100 °C
< 1.24 W/set (< 401 mW/cm ³)	3000 kHz, 10 mT, 100 °C

NOTE

Spec. modifications	Previous	Revised
2011-12-15	Ae=89.7 mm ² Amin=82.8 mm ² Le=26.4 mm Ve=2370 mm ³ Al.= 3300±25% Pv< 0.53 W/set (1000 kHz, 30 mT, 100°C) Pv< 0.95 W/set (3000 kHz, 10 mT, 100°C)	Ae=91.8 mm ² Amin=86.4 mm ² Le=33.8 mm Ve=3100 mm ³ Al.=2650±25% Pv< 0.69 W/set (1000 kHz, 30 mT, 100°C) Pv< 1.24 W/set (3000 kHz, 10 mT, 100°C)
2015-09-22	Marking: No marking	Marking: OLEC 42517