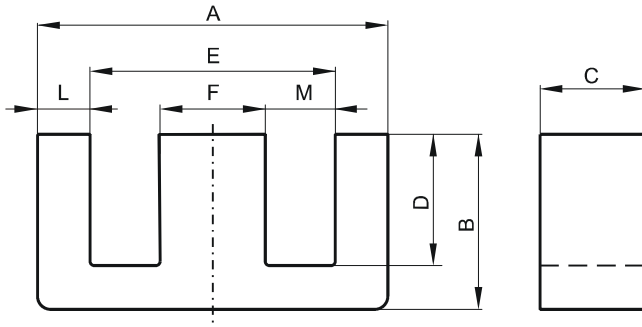


DIMENSIONS



(mm)	Nominal:	Tol. min.:	Tol. max.:
A	16.8	-0.38	+ 0.38
B	7.11	-0.18	+ 0.18
C	3.56	-0.12	+ 0.12
D	3.94 Min.		
E	10.4 Min.		
F	3.56	-0.13	+ 0.13
L	2.79 Nom.		
M	3.63 Min.		
Eff. Parameters			
Ae mm ²	Amin mm ²	le mm	Ve mm ³
16.6	12.6	30.4	505

INDUCTANCE

MARKING

AL value (nH/T ²)	Test conditions	No marking
520 ± 25%	10 kHz, < 0.5 mT, 25 °C	

CORE LOSSES

P _i max	Test conditions
< 0.114 W/set (< 226 mW/cm ³)	1000 kHz, 30 mT, 100 °C
< 0.2 W/set (< 396 mW/cm ³)	3000 kHz, 10 mT, 100 °C