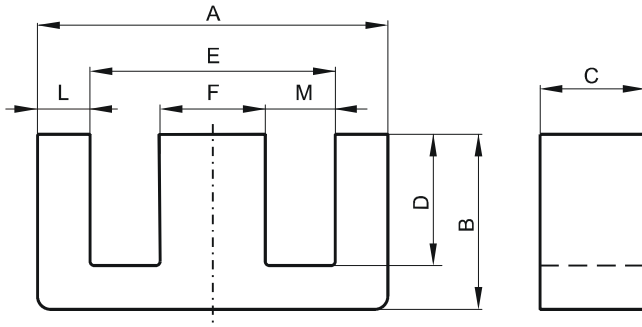


DIMENSIONS



(mm)	Nominal:	Tol. min.:	Tol. max.:
A	9.0	-0.4	+ 0.4
B	4.06	-0.25	+ 0.25
C	1.91	-0.13	+ 0.13
D	2.03 Min.		
E	4.85 Min.		
F	1.91	-0.13	+ 0.13
L	1.91	-0.25	+ 0.25
M	1.57	-0.25	+ 0.25
Eff. Parameters			
Ae mm²	Amin mm²	le mm	Ve mm³
5.0	3.6	15.6	78

INDUCTANCE

AL value (nH/T²)	Test conditions
280 ± 25%	10 kHz, < 0.5 mT, 25 °C

MARKING

No marking

CORE LOSSES

P_i max	Test conditions
< 0.018 W/set (< 231 mW/cm ³)	1000 kHz, 30 mT, 100 °C