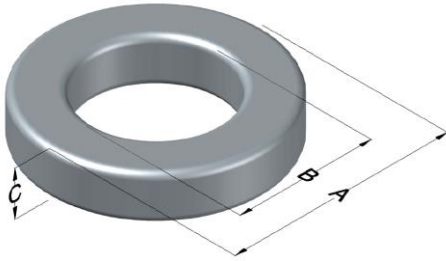




# C058278A2

110 Delta Drive  
 Pittsburgh, PA 15238  
 NAFTA Sales: (1)800-245-3984  
 HK Sales : (852)3102-9337  
 magnetics@spang.com  
 www.mag-inc.com



High Flux Permeability ( $\mu$ )	$A_L$ (nH/T <sup>2</sup> )	Core Marking			Coating Color
		Lot Number	Part Number	Inductance Grade	
160	68 ± 8%	XXXXXX	278A2	X	Khaki

Dimensions	Uncoated		Coated Limits			Packaging
	(mm)	(in)	(mm)	(in)		
OD (A)	9.65	0.380	10.3	0.405	max	Bulk Pack 4 bags/box Box Qty= 8000 pcs
ID (B)	4.78	0.188	4.26	0.168	min	
HT (C)	3.18	0.125	3.81	0.150	max	

Electrical Characteristics			Physical Characteristics						
Watt Loss @ 100 kHz, 100mT typical (mW/cm <sup>3</sup> )	DC Bias typical (A-T/cm)		Voltage Breakdown wire to wire min (V <sub>AC</sub> )	Break Strength min (kg)	Window Area W <sub>A</sub> (mm <sup>2</sup> )	Cross Section A <sub>e</sub> (mm <sup>2</sup> )	Path Length L <sub>e</sub> (mm)	Volume V <sub>e</sub> (mm <sup>3</sup> )	Weight (g)
	80%	50%							
1500	25.8	50.1	1000	5.4	14.3	7.52	21.8	164	1.3

Winding Information					Temperature Rating	
Winding Length Per Turn				Wound Coil Dimensions (mm)		Curie Temp: 500°C
Winding Factor	(mm)	Winding Factor	(mm)	40% Winding Factor		Coating Temp (Continuous up to): 200°C
				OD	11.0	Notes:
0%	13.6	40%	15.9	HT	5.17	
				Completely Full Window		
20%	14.7	45%	16.2	Max HT	7.44	
25%	15.0	50%	16.5	Surface Area (mm <sup>2</sup> )		
30%	15.3	60%	17.2	Unwound Core	310	
35%	15.6	70%	17.9	40% Winding Factor	410	

