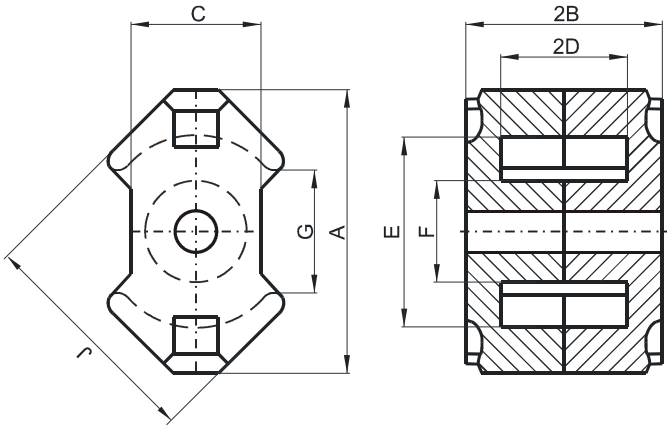


Specification for:

## RW42316UG

110 Delta Drive  
Pittsburgh, PA 15238  
Phone: 412/696-1333  
Fax: 412/696-0333  
Email: magnetics@spang.com

### DIMENSIONS



(mm)	Nominal:	Tol. min.:	Tol. max.:
<b>A</b>	23.2 Max.		
<b>B</b>	8.2	-0.05	+ 0.05
<b>2B</b>	16.4	-0.1	+ 0.1
<b>C</b>	10.8 Nom.		
<b>D</b>	5.53	-0.13	+ 0.13
<b>2D</b>	11.05	-0.25	+ 0.25
<b>E</b>	17.35	-0.35	+ 0.35
<b>F</b>	8.4	-0.15	+ 0.15
<b>G</b>	11.7 Nom.		
<b>H</b>	4.5	-0.1	+ 0.1
<b>J</b>	19.3	-0.4	+ 0.4
<b>Eff. Parameters</b>			
<b>Ae mm<sup>2</sup></b>	<b>Amin mm<sup>2</sup></b>	<b>le mm</b>	<b>Ve mm<sup>3</sup></b>
52.0	36.9	35.5	1850

### INDUCTANCE

AL value (nH)	Test conditions
Nom: 10600 Min.: 7420	10 kHz, < 0.5 mT, 25 °C

### MARKING

No marking
------------

### LOSS FACTOR

$\tan \delta / \mu$ ( $\times 10^{-6}$ )	Test conditions
< 3.5	10 kHz, < 0.25 mT, 25 °C
< 50	100 kHz, < 0.25 mT, 25 °C

### NOTE

Spec. modifications	Previous	Revised
2005-06-22	Loss factor: General W material Marking	Loss factor: Detail as indicated No marking