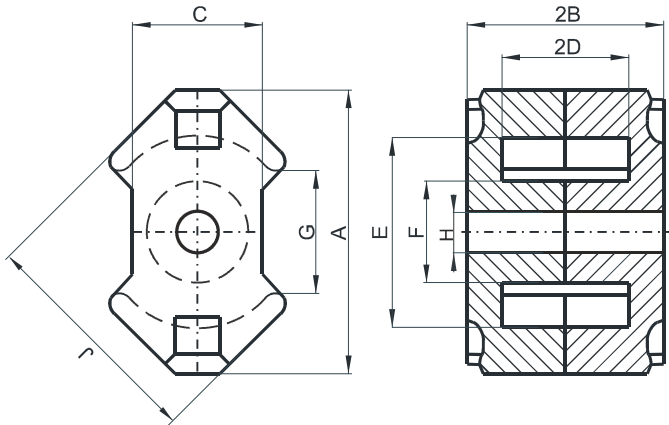


DIMENSIONS



(mm)	Nominal:	Tol. min.:	Tol. max.:
A	23.2 Max.		
B	8.2	-0.05	+ 0.05
2B	16.4	-0.1	+ 0.1
C	10.8 Nom.		
D	5.53	-0.13	+ 0.13
2D	11.05	-0.25	+ 0.25
E	17.35	-0.35	+ 0.35
F	8.4	-0.15	+ 0.15
G	11.7 Nom.		
H	4.5	-0.1	+ 0.1
J	19.3	-0.4	+ 0.4
Eff. Parameters			
Ae mm²	Amin mm²	le mm	Ve mm³
52.0	36.9	35.5	1850

INDUCTANCE

MARKING

AL value (nH/T ²)	Test conditions	
Nom: 2347 Min.: 1760	10 kHz, < 0.5 mT, 25 °C	R UG

CORE LOSSES

P _i max	Test conditions
97 mW/cm ³ (0.18 W/set)	100 kHz, 100 mT, 100 °C
541 mW/cm ³ (1.0 W/set)	100 kHz, 200 mT, 100 °C

NOTE

Spec. modifications	Previous	Revised
2005-06-22	Losses: General R material	Losses: Detail as indicated