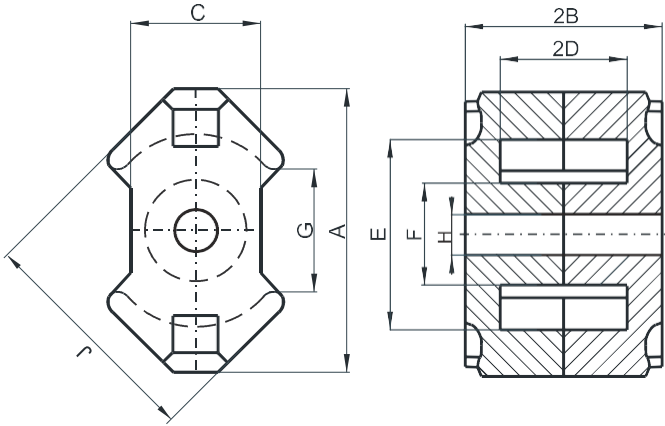


RJ-42819-UG

DIMENSIONS



(mm)	Nominal:	Tol. min.:	Tol. max.:
A	28.5	-1.3	0.0
B	9.3	-0.05	+ 0.05
2B	18.6	-0.1	+ 0.1
C	13.5	-0.5	0.0
D	6.2	0.0	+ 0.3
2D	12.4	0.0	+ 0.6
E	21.2	0.0	+ 0.9
F	10.9	-0.4	0.0
G	10.9 Min.		
H	5.4	0.0	+ 0.2
J	24.7	-1.1	0.0
Eff. Parameters			
Ae mm²	Amin mm²	le mm	Ve mm³
81.9	65.3	43.5	3570

INDUCTANCE

AL value (nH/T ²)	Test conditions
8000 ± 25%	10 kHz, < 0.1 mT, 25 °C

MARKING

J UG

CORE LOSSES

P _i max	Test conditions
---	---

NOTE

Spec. modifications	Previous	Revised