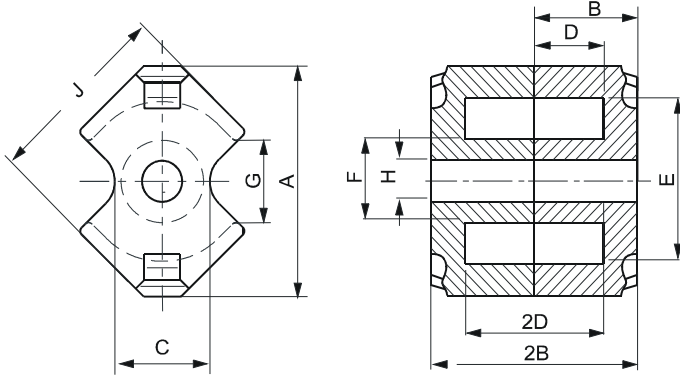


Specification for:

## RF41812UG

110 Delta Drive  
Pittsburgh, PA 15238  
Phone: 412/696-1333  
Fax: 412/696-0333  
Email: magnetics@spang.com

### DIMENSIONS



(mm)	Nominal:	Tol. min.:	Tol. max.:
<b>A</b>	18.3 Max.		
<b>B</b>	6.2	-0.05	+ 0.05
<b>2B</b>	12.4	-0.1	+ 0.1
<b>C</b>	7.4 Nom.		
<b>D</b>	4.1	-0.1	+ 0.1
<b>2D</b>	8.2	-0.2	+ 0.2
<b>E</b>	12.65	-0.25	+ 0.25
<b>F</b>	6.25	-0.15	+ 0.15
<b>G</b>	5.85 Nom.		
<b>H</b>	3.05	-0.05	+ 0.05
<b>J</b>	14.4	-0.3	+ 0.3
Eff. Parameters			
Ae mm <sup>2</sup>	Amin mm <sup>2</sup>	le mm	Ve mm <sup>3</sup>
32.0	22.6	25.6	819

### INDUCTANCE

AL value (nH)	Test conditions
2800 ± 25%	10 kHz, < 0.5 mT, 25 °C

### MARKING

No marking
------------

### CORE LOSSES

P <sub>i</sub> max	Test conditions
232 mW/cm <sup>3</sup> (0.19 W/set)	25 kHz, 200 mT, 100 °C

### NOTE

Spec. modifications	Previous	Revised
2005-06-22	Losses: General F material Marking	Losses: Detail as indicated No marking