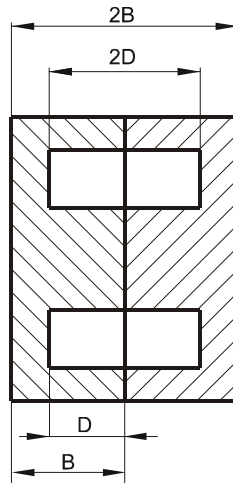
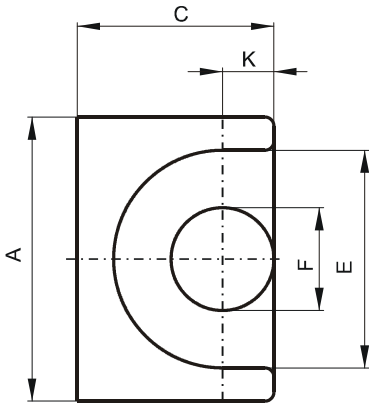


Specification for:

PJ41313UG

110 Delta Drive
Pittsburgh, PA 15238
Phone: 412/696-1333
Fax: 412/696-0333
Email: magnetics@spang.com

DIMENSIONS



(mm)	Nominal:	Tol. min.:	Tol. max.:
A	12.8	-0.6	0.0
B	6.45	-0.08	+ 0.08
2B	12.9	-0.16	+ 0.16
C	9.0	-0.4	0.0
D	4.5	0.0	+ 0.2
2D	9.0	0.0	+ 0.4
E	9.7	0.0	+ 0.6
F	4.5	-0.3	0.0
K	2.4	-0.1	+ 0.1
Eff. Parameters			
Ae mm ²	Amin mm ²	le mm	Ve mm ³
19.5	14.9	24.2	472

INDUCTANCE

AL value (nH)	Test conditions
Nom: 3733 Min.: 2800	10 kHz, < 0.5 mT, 25 °C

MARKING

No marking

LOSS FACTOR

$\tan \delta/\mu$ ($\times 10^{-6}$)	Test conditions
< 20	100 kHz, < 0.25 mT, 25 °C

NOTE

Spec. modifications	Previous	Revised
2005-06-22	A=12.22 Min. A=12.78 Max. B=6.50 Max. 2B=13.00 Max. E=9.73 Min. Loss factor: General J material	A=12.2 Min. A=12.8 Max. B=6.53 Max. 2B=13.06 Max. E=9.70 Min. Loss factor: Detail as indicated