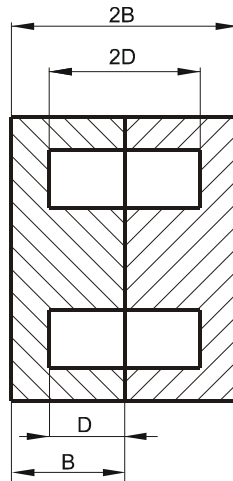
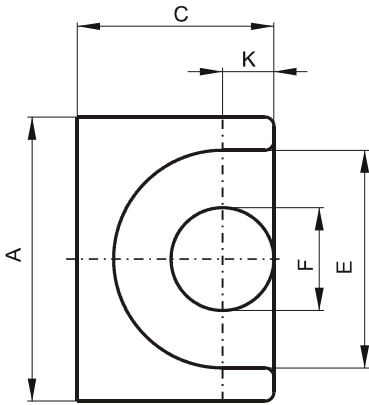


Specification for:

PJ41010UG

110 Delta Drive
Pittsburgh, PA 15238
Phone: 412/696-1333
Fax: 412/696-0333
Email: magnetics@spang.com

DIMENSIONS



(mm)	Nominal:	Tol. min.:	Tol. max.:
A	11.5	-0.3	+ 0.3
B	5.15	-0.1	+ 0.1
2B	10.3	-0.2	+ 0.2
C	7.6	-0.2	+ 0.2
D	3.6 Min.		
2D	7.2 Min.		
E	9.2 Min.		
F	3.45 Max.		
K	1.85	-0.1	+ 0.1
Eff. Parameters			
Ae mm²	Amin mm²	le mm	Ve mm³
11.3	8.55	19.3	215

INDUCTANCE

AL value (nH)	Test conditions
Nom: 2467 Min.: 1850	10 kHz, < 0.5 mT, 25 °C

MARKING

No marking

LOSS FACTOR

$\tan \delta/\mu$ ($\times 10^{-6}$)	Test conditions
< 20	100 kHz, < 0.25 mT, 25 °C

NOTE

Spec. modifications	Previous	Revised
2005-06-22	B=5.23 Max. 2B=10.46 Max. C=7.44 Min. Loss factor: General J material	B=5.25 Max. 2B=10.5 Max. C=7.4 Min. Loss factor: Detail as indicated