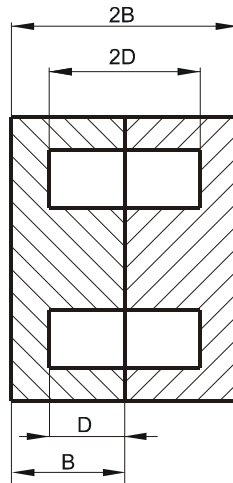
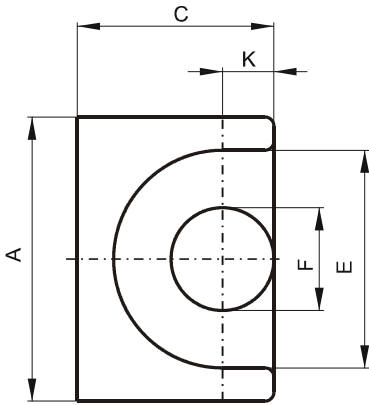


Specification for:

**PF40707UG**

110 Delta Drive  
Pittsburgh, PA 15238  
Phone: 412/696-1333  
Fax: 412/696-0333  
Email: magnetics@spang.com

**DIMENSIONS**



(mm)	Nominal:	Tol. min.:	Tol. max.:
<b>A</b>	9.2	-0.2	+ 0.2
<b>B</b>	3.7	-0.05	+ 0.05
<b>2B</b>	7.4	-0.1	+ 0.1
<b>C</b>	6.35	-0.15	+ 0.15
<b>D</b>	2.5 Min.		
<b>2D</b>	5.0 Min.		
<b>E</b>	7.2 Min.		
<b>F</b>	3.4 Max.		
<b>K</b>	1.7	-0.1	+ 0.1
<b>Eff. Parameters</b>			
<b>Ae mm<sup>2</sup></b>	<b>Amin mm<sup>2</sup></b>	<b>le mm</b>	<b>Ve mm<sup>3</sup></b>
10.7	8.55	15.5	165

**INDUCTANCE**

AL value (nH)	Test conditions
1240 ± 25%	10 kHz, < 0.5 mT, 25 °C

**MARKING**

No marking

**CORE LOSSES**

P <sub>i</sub> max	Test conditions
247 mW/cm <sup>3</sup> (0.04 W/set)	25 kHz, 200 mT, 100 °C

**NOTE**

Spec. modifications	Previous	Revised
2005-06-22	Losses: General F material	Losses: Detail as indicated