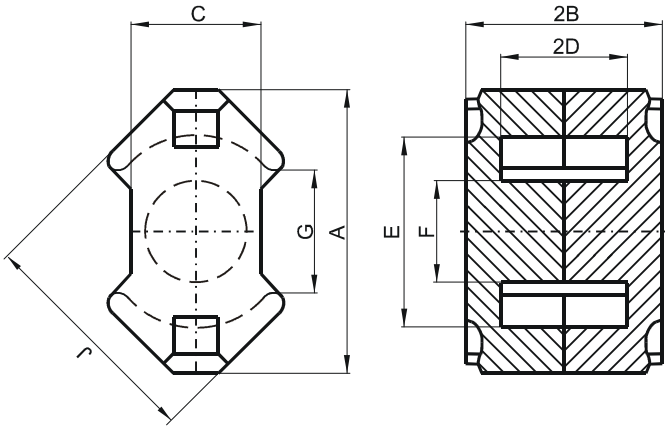


Specification for:

## NW42316UG

110 Delta Drive  
Pittsburgh, PA 15238  
Phone: 412/696-1333  
Fax: 412/696-0333  
Email: magnetics@spang.com

### DIMENSIONS



(mm)	Nominal:	Tol. min.:	Tol. max.:
<b>A</b>	23.2	-0.9	0.0
<b>B</b>	8.2	-0.05	+ 0.05
<b>2B</b>	16.4	-0.1	+ 0.1
<b>C</b>	11.0	-0.5	0.0
<b>D</b>	5.5	-0.1	+ 0.1
<b>2D</b>	11.0	-0.2	+ 0.2
<b>E</b>	17.0	0.0	+ 0.6
<b>F</b>	8.55	-0.3	0.0
<b>G</b>	9.5 Min.		
<b>J</b>	19.7	-0.8	0.0
Eff. Parameters			
<b>Ae mm<sup>2</sup></b>	<b>Amin mm<sup>2</sup></b>	<b>le mm</b>	<b>Ve mm<sup>3</sup></b>
63.0	55.4	38.4	2440

### INDUCTANCE

AL value (nH)	Test conditions
Nom: 12200 Min.: 8540	10 kHz, < 0.5 mT, 25 °C

### MARKING

No marking
------------

### LOSS FACTOR

$\tan \delta/\mu$ ( $\times 10^{-6}$ )	Test conditions
< 3.5	10 kHz, < 0.25 mT, 25 °C
< 50	100 kHz, < 0.25 mT, 25 °C

### NOTE

Spec. modifications	Previous	Revised
2005-06-16	C=10.8 Nom. G=10.54 Nom. Loss factor: General W material Marking	C=11.0 Nom. G=9.5 Min. Loss factor: Detail as indicated No marking