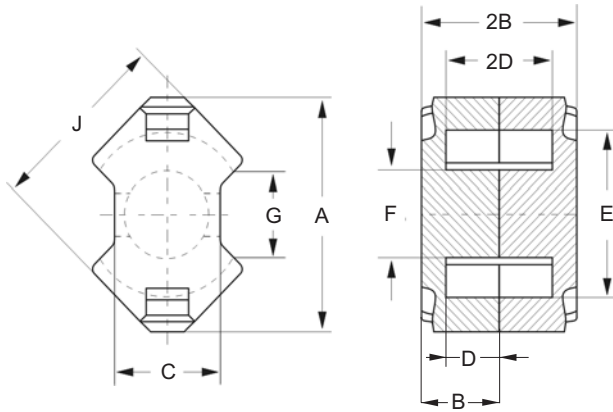


DIMENSIONS



(mm)	Nominal:	Tol.min.:	Tol.max.:
(A)	37.4	-1.3	0
(B)	12.25	-0.05	+0.05
(2B)	24.5	-0.1	+0.1
(C)	16.1	-0.5	0
(D)	8.4	0	+0.3
(2D)	16.8	0	+0.6
(E)	24.9	0	+1.1
(F)	12.8	-0.4	0
(G)	>12.9	---	---
(J)	29.8	-1.1	0
Eff. Parameters			
Ae mm²	Amin. mm²	le mm	Ve mm³
146	125	56.6	8340

INDUCTANCE

AI value (nH)	Test conditions
Nominal: 4600 Minimum: 3450	10 kHz, 0.5 mT, 25°C

CORE LOSSES

P_i max	Test conditions
96 mW/cm ³ (0.8 W/set) 540 mW/cm ³ (4.5 W/set)	100 kHz, 100 mT, 100°C 100 kHz, 200 mT, 100°C

MARKING

No marking

NOTE

Spec. modification	Previous	Revised
2005.06.16	B=11.73±0.05 2B=23.46±0.1 C=15.9 NOM. E=24.99 MIN. G=15.2 NOM LOSSES: GENERAL R MATERIAL MARKING	B=12.25±0.05 2B=24.5±0.1 C=16.1 MAX. C=15.6 MIN. E=24.9 MIN. G=12.9 MIN. LOSSES: DETAIL AS INDICATED NO MARKING