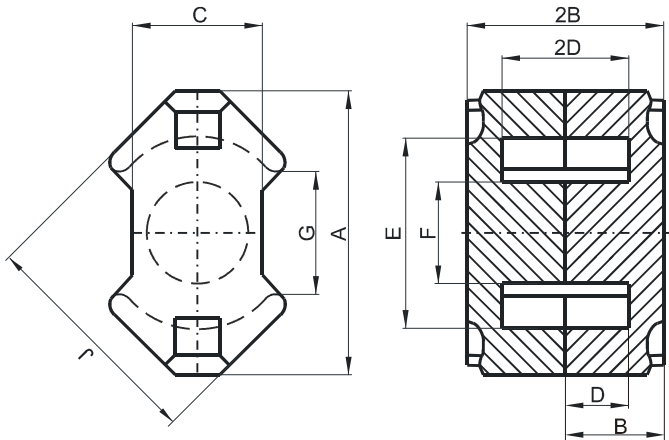


**DIMENSIONS**



(mm)	Nominal:	Tol. min.:	Tol. max.:
<b>A</b>	42.2	-1.4	0.0
<b>B</b>	15.05	-0.05	+ 0.05
<b>2B</b>	30.1	-0.1	+ 0.1
<b>C</b>	19.0	-0.6	0.0
<b>D</b>	10.4	0.0	+ 0.3
<b>2D</b>	20.8	0.0	+ 0.6
<b>E</b>	29.0	0.0	+ 1.2
<b>F</b>	15.0	-0.6	0.0
<b>G</b>	17.0 Nom.		
<b>J</b>	34.8	-1.3	0.0
<b>Eff. Parameters</b>			
<b>Ae mm<sup>2</sup></b>	<b>Amin mm<sup>2</sup></b>	<b>le mm</b>	<b>Ve mm<sup>3</sup></b>
198.0	168.0	70.0	13900

**INDUCTANCE**

<b>AL value (nH/T<sup>2</sup>)</b>	<b>Test conditions</b>
Nom: 7540 Min.: 5655	10 kHz, < 0.5 mT, 25 °C

**MARKING**

P UG
---------

**CORE LOSSES**

<b>P<sub>i</sub> max</b>	<b>Test conditions</b>
127 mW/cm <sup>3</sup> (1.76 W/set)	100 kHz, 100 mT, 100 °C