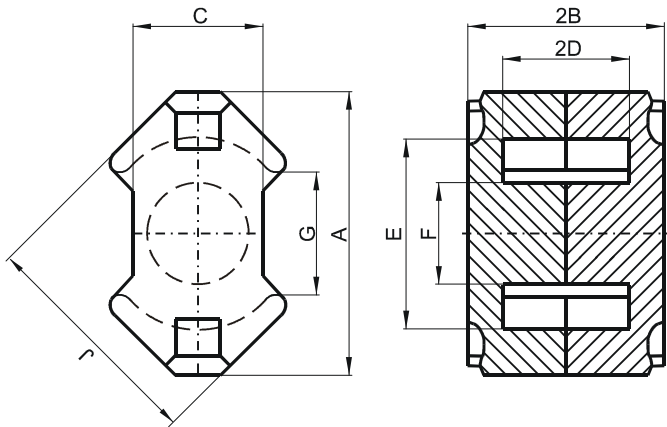


Specification for:

## NJ43723UG

110 Delta Drive  
Pittsburgh, PA 15238  
Phone: 412/696-1333  
Fax: 412/696-0333  
Email: magnetics@spang.com

### DIMENSIONS



(mm)	Nominal:	Tol. min.:	Tol. max.:
<b>A</b>	37.4	-1.3	0.0
<b>B</b>	12.25	-0.05	+ 0.05
<b>2B</b>	24.5	-0.1	+ 0.1
<b>C</b>	16.1	-0.5	0.0
<b>D</b>	8.4	0.0	+ 0.3
<b>2D</b>	16.8	0.0	+ 0.6
<b>E</b>	24.9	0.0	+ 1.1
<b>F</b>	12.8	-0.4	0.0
<b>G</b>	12.9 Min.		
<b>J</b>	29.8	-1.1	0.0
Eff. Parameters			
Ae mm <sup>2</sup>	Amin mm <sup>2</sup>	le mm	Ve mm <sup>3</sup>
146	125	56.6	8340

### INDUCTANCE

AL value (nH)	Test conditions
Nom: 11800 Min.: 8850	10 kHz, < 0.5 mT, 25 °C

### MARKING

No marking
------------

### LOSS FACTOR

$\tan \delta/\mu$ ( $\times 10^{-6}$ )	Test conditions
< 30	100 kHz, < 0.25 mT, 25 °C

### NOTE

Spec. modifications	Previous	Revised
2005-06-22	B=11.73±0.05 2B=23.46±0.1 C=15.9 Nom.  E=24.99 Min. G=15.2 Nom. Loss factor: General J material	B=12.25±0.05 2B=24.5±0.1 C=16.1 Max. C=15.6 MIN. E=24.9 Min. G=12.9 Min. Loss factor: Detail as indicated