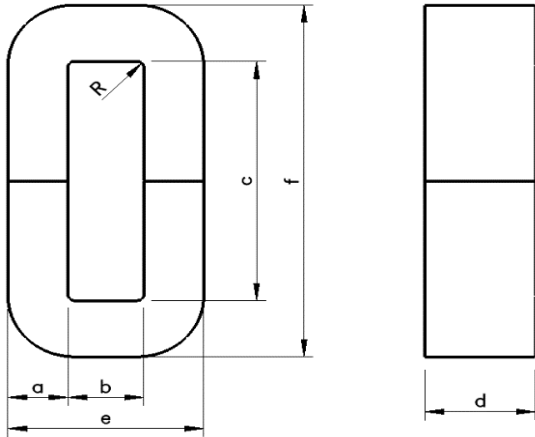




**MACC016A**

110 Delta Drive  
 Pittsburgh, PA 15238  
 NAFTA Sales: (1) 800-245-3984  
 HK Sales: (852) 3102-9337  
 magnetics@spang.com  
 www.mag-inc.com



	Dim (mm)	tol +/-
a	10.8	0.8
b	13.0	min
c	40.5	min
d	25.0	0.5
e	35.5	1.5
f	62.5	2.5
R		Ref

$A_e(\text{cm}^2)$	$L_e(\text{cm})$	Weight (g)	$W_a(\text{cm}^2)$
2.3	15.1	230 ref	

Material	Amorphous
Core Loss (@16kHz/37mT, 25° C +/- 3° C, Humidity 65% +/- 5%)	<1.00 W/kg
Working Temperature	-40°C + 130°C
Saturation Flux Density	1.56 Tesla
Density	7.18 g/cm <sup>3</sup>
Resistivity	130 μΩ cm
Curie Temperature	410° C
Stacking Factor	>0.86