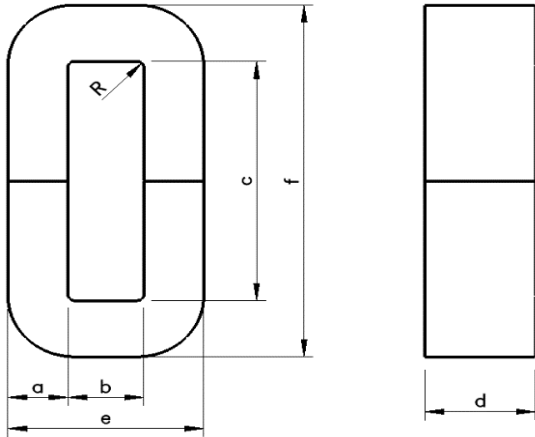




MACC0160

110 Delta Drive
 Pittsburgh, PA 15238
 NAFTA Sales: (1) 800-245-3984
 HK Sales: (852) 3102-9337
 magnetics@spang.com
 www.mag-inc.com



	Dim (mm)	tol +/-
a	19.0	1.0
b	24.0	min
c	83.0	min
d	40.0	0.5
e	63.0	2.0
f	122.0	3.0
R	2.0	Ref

$A_e(\text{cm}^2)$	$L_e(\text{cm})$	Weight (g)	$W_a(\text{cm}^2)$
6.6	27.3	1330 ref	

Material	Amorphous
Core Loss (@16kHz/37mT, 25° C +/- 3° C, Humidity 65% +/- 5%)	<1.00 W/kg
Working Temperature	-40°C + 130°C
Saturation Flux Density	1.56 Tesla
Density	7.18 g/cm ³
Resistivity	130 μΩ cm
Curie Temperature	410° C
Stacking Factor	>0.86