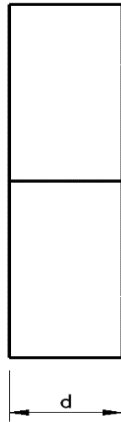
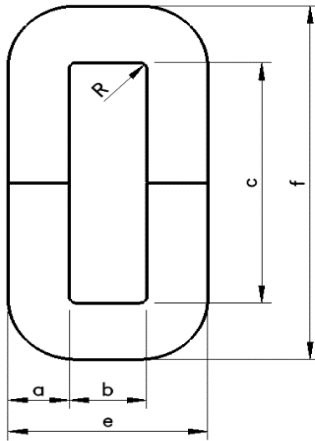




**MACC0020Y**

110 Delta Drive  
 Pittsburgh, PA 15238  
 NAFTA Sales: (1) 800-245-3984  
 HK Sales: (852) 3102-9337  
 magnetics@spang.com  
 www.mag-inc.com



	Dim (mm)	tol +/-
a	11.0	1.0
b	12.0	min
c	50.0	min
d	30.0	ref
e	35.5	1.5
f	73.0	2.0
R	2.0	ref

$A_e$ (cm <sup>2</sup> )	$L_e$ (cm)	Weight (g)	$W_a$ (cm <sup>2</sup> )
2.8	16.2	337 Ref	6.6 ref

Material	Amorphous
Core Loss (@16kHz/37mT, 25° C +/- 3°C, Humidity 65% +/- 5%)	≤1.0 W/kg
Working Temperature	-40°C + 130°C
Storage Temperature	-40°C + 80°C