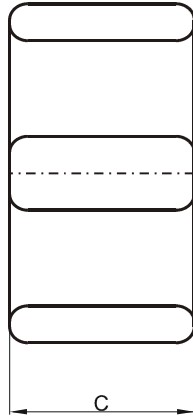
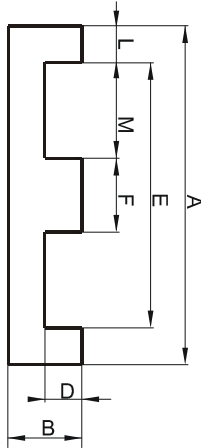


Specification for:

**FR41805EC**

110 Delta Drive  
Pittsburgh, PA 15238  
Phone: 412/696-1333  
Fax: 412/696-0333  
Email: magnetics@spang.com

**DIMENSIONS**



(mm)	Nominal:	Tol. min.:	Tol. max.:
<b>A</b>	18.0	-0.35	+ 0.35
<b>B</b>	4.0	-0.1	+ 0.1
<b>C</b>	10.0	-0.2	+ 0.2
<b>D</b>	2.0	-0.1	+ 0.1
<b>E</b>	13.7 Min.		
<b>F</b>	4.0	-0.1	+ 0.1
<b>L</b>	2.0 Ref.		
<b>M</b>	5.0 Ref.		
Eff. Parameters			
Ae mm <sup>2</sup>	Amin mm <sup>2</sup>	le mm	Ve mm <sup>3</sup>
40.1	39.9	24.2	972

**INDUCTANCE**

AL value (nH)	Test conditions
Nom: 3244 Min.: 2433	10 kHz, < 0.5 mT, 25 °C

**MARKING**

R EC
---------

**CORE LOSSES**

P <sub>i</sub> max	Test conditions
87 mW/cm <sup>3</sup> (0.085 W/set)	100 kHz, 100 mT, 100 °C
617 mW/cm <sup>3</sup> (0.6 W/set)	100 kHz, 200 mT, 100 °C

**NOTE**

Spec. modifications	Previous	Revised
2005-06-22	Al= 2520 Min. Losses: General R material	Al= 2433 Min. Losses: Detail as indicated