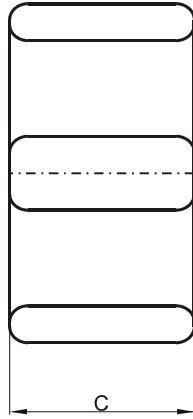
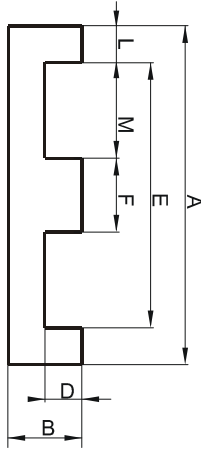


Specification for:

FP46410EC

110 Delta Drive
Pittsburgh, PA 15238
Phone: 412/696-1333
Fax: 412/696-0333
Email: magnetics@spang.com

DIMENSIONS



(mm)	Nominal:	Tol. min.:	Tol. max.:
A	64.0	-0.76	+ 0.76
B	10.2	-0.1	+ 0.1
C	50.8	-0.81	+ 0.81
D	5.03 Min.		
E	53.16 Min.		
F	10.16	-0.18	+ 0.18
L	5.08	-0.12	+ 0.12
M	21.8	-0.25	+ 0.25
Eff. Parameters			
Ae mm ²	Amin mm ²	le mm	Ve mm ³
516.0	516.0	80.2	41400

INDUCTANCE

AL value (nH)	Test conditions
Nom: 15599 Min.: 11699	10 kHz, < 0.5 mT, 25 °C

MARKING

FP46410EC PXXXXX

CORE LOSSES

P _i max	Test conditions
116 mW/cm ³ (4.8 W/set)	100 kHz, 100 mT, 100 °C

NOTE

Spec. modifications	Previous	Revised
2005-06-22	AL=12100 Min. AL=16133 Nom. M=21.59 Min. Losses: General P material	AL=11699 Min. AL=15599 Nom. M=21.55 Min. Losses: Detail as indicated