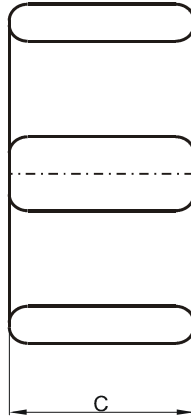
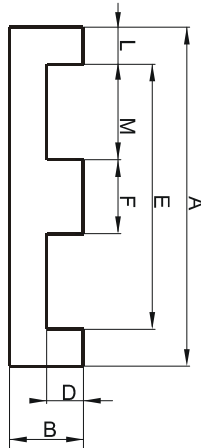


**DIMENSIONS**



(mm)	Nominal:	Tol. min.:	Tol. max.:
<b>A</b>	58.42	-1.2	+ 1.2
<b>B</b>	10.54	-0.2	+ 0.2
<b>C</b>	38.1	-0.8	+ 0.8
<b>D</b>	6.35 Min.		
<b>E</b>	50.0 Min.		
<b>F</b>	8.1	-0.2	+ 0.2
<b>L</b>	3.7 Ref.		
<b>M</b>	21.4 Ref.		
<b>Eff. Parameters</b>			
<b>Ae mm<sup>2</sup></b>	<b>Amin mm<sup>2</sup></b>	<b>le mm</b>	<b>Ve mm<sup>3</sup></b>
308	308	80.6	24600

**INDUCTANCE**

**MARKING**

AL value (nH/T <sup>2</sup> )	Test conditions	
Nom: 9073 Min.: 6805	10 kHz, < 0.5 mT, 25 °C	FP45810EC PXXXXX

**CORE LOSSES**

P <sub>i</sub> max	Test conditions
122 mW/cm <sup>3</sup> (3 W/set)	100 kHz, 100 mT, 100 °C

**NOTE**

Spec. modifications	Previous	Revised
2005-06-22	AL=7546 Min. E=50.39 Min. Losses: General P material	AL=6805 Min. E=50.0 Min. Losses: Detail as indicated