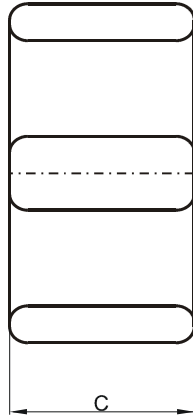
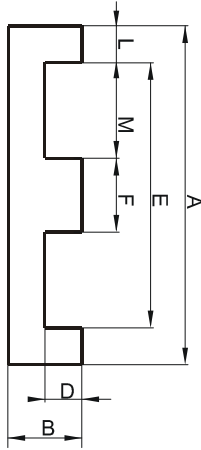


Specification for:

FP42216EC

110 Delta Drive
Pittsburgh, PA 15238
Phone: 412/696-1333
Fax: 412/696-0333
Email: magnetics@spang.com

DIMENSIONS



(mm)	Nominal:	Tol. min.:	Tol. max.:
A	21.8	-0.4	+ 0.4
B	5.72	-0.1	+ 0.12
C	15.8	-0.3	+ 0.3
D	3.05 Min.		
E	16.1 Min.		
F	5.08	-0.12	+ 0.12
L	2.5 Ref.		
M	5.9 Ref.		
Eff. Parameters			
Ae mm ²	Amin mm ²	le mm	Ve mm ³
78.5	76.0	32.5	2550

INDUCTANCE

AL value (nH)	Test conditions
Nom: 5387 Min.: 4040	10 kHz, < 0.5 mT, 25 °C

MARKING

FP42216EC PXXXXX

CORE LOSSES

P _i max	Test conditions
110 mW/cm ³ (0.28 W/set)	100 kHz, 100 mT, 100 °C

NOTE

Spec. modifications	Previous	Revised
2005-06-22	A=21.6±0.26 C=15.6 Min. L=2.54±0.13 M=5.72±0.31 Losses: General P material	A=21.8±0.4 C=15.5 Min. L=2.5 Ref. M=5.9 Ref. Losses: Detail as indicated