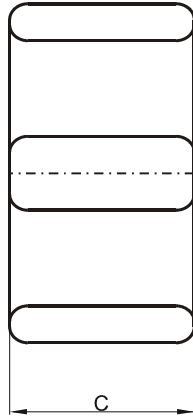
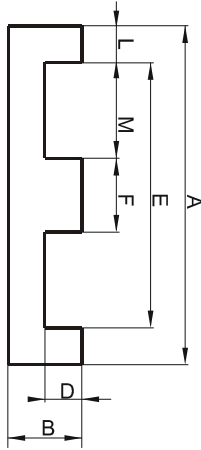


Specification for:

FP41805EC

110 Delta Drive
Pittsburgh, PA 15238
Phone: 412/696-1333
Fax: 412/696-0333
Email: magnetics@spang.com

DIMENSIONS



(mm)	Nominal:	Tol. min.:	Tol. max.:
A	18.0	-0.35	+ 0.35
B	4.0	-0.1	+ 0.1
C	10.0	-0.2	+ 0.2
D	2.0	-0.1	+ 0.1
E	13.7 Min.		
F	4.0	-0.1	+ 0.1
L	2.0 Ref.		
M	5.0 Ref.		
Eff. Parameters			
Ae mm ²	Amin mm ²	le mm	Ve mm ³
40.1	39.9	24.2	972

INDUCTANCE

AL value (nH)	Test conditions
Nom: 3430 Min.: 2573	10 kHz, < 0.5 mT, 25 °C

MARKING

P EC

CORE LOSSES

P _i max	Test conditions
108 mW/cm ³ (0.105 W/set)	100 kHz, 100 mT, 100 °C

NOTE

Spec. modifications	Previous	Revised
2005-06-22	Al=2740 Min. Losses: General P material	Al=2573 Min. Losses: Detail as indicated