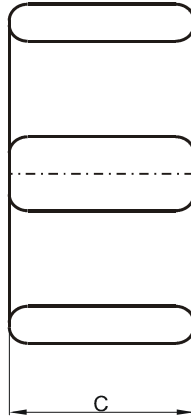
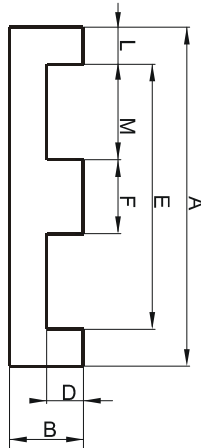


**DIMENSIONS**



(mm)	Nominal:	Tol. min.:	Tol. max.:
<b>A</b>	38.1	-0.76	+ 0.76
<b>B</b>	8.26	-0.13	+ 0.13
<b>C</b>	25.4	-0.51	+ 0.51
<b>D</b>	4.45	-0.13	+ 0.13
<b>E</b>	30.23 Min.		
<b>F</b>	7.62	-0.15	+ 0.15
<b>L</b>	3.81		
<b>M</b>	11.43		
<b>Eff. Parameters</b>			
<b>Ae mm<sup>2</sup></b>	<b>Amin mm<sup>2</sup></b>	<b>le mm</b>	<b>Ve mm<sup>3</sup></b>
194.0	194.0	52.4	10200

**INDUCTANCE**

**MARKING**

<b>AL value (nH/T<sup>2</sup>)</b>	<b>Test conditions</b>	<b>No marking</b>
3880 ± 25%	10 kHz, < 0.5 mT, 25 °C	

**CORE LOSSES**

<b>P<sub>i</sub> max</b>	<b>Test conditions</b>
238 mW/cm <sup>3</sup> (2.43 W/set)	1000 kHz, 30 mT, 100 °C