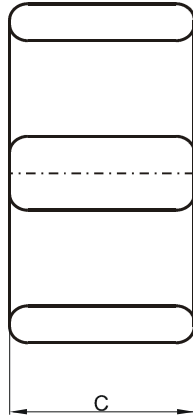
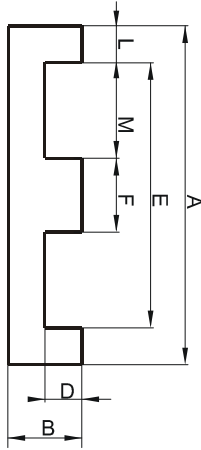


Specification for:

**FF45810EC**

110 Delta Drive  
Pittsburgh, PA 15238  
Phone: 412/696-1333  
Fax: 412/696-0333  
Email: magnetics@spang.com

**DIMENSIONS**



(mm)	Nominal:	Tol. min.:	Tol. max.:
<b>A</b>	58.42	-1.2	+ 1.2
<b>B</b>	10.54	-0.2	+ 0.2
<b>C</b>	38.1	-0.8	+ 0.8
<b>D</b>	6.35 Min.		
<b>E</b>	50.0 Min.		
<b>F</b>	8.1	-0.2	+ 0.2
<b>L</b>	3.7 Ref.		
<b>M</b>	21.4 Ref.		
Eff. Parameters			
Ae mm <sup>2</sup>	Amin mm <sup>2</sup>	le mm	Ve mm <sup>3</sup>
308	308	80.6	24600

**INDUCTANCE**

AL value (nH)	Test conditions
10427 ± 25%	10 kHz, < 0.5 mT, 25 °C

**MARKING**

FF45810EC PXXXXX
---------------------

**CORE LOSSES**

P <sub>i</sub> max	Test conditions
207 mW/cm <sup>3</sup> (5.1 W/set)	25 kHz, 200 mT, 100 °C

**NOTE**

Spec. modifications	Previous	Revised
2005-06-22	AL=12551±25% E=50.39 Min. Losses: General F material	AL=10427±25% E=50.0 Min. Losses: Detail as indicated