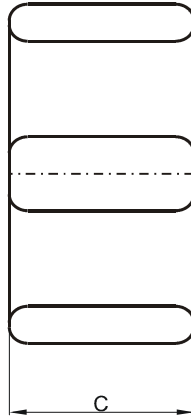
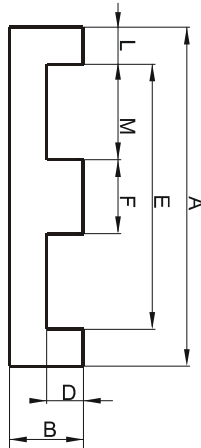


DIMENSIONS



(mm)	Nominal:	Tol. min.:	Tol. max.:
A	38.1	-0.76	+ 0.76
B	8.26	-0.13	+ 0.13
C	25.4	-0.51	+ 0.51
D	4.45	-0.13	+ 0.13
E	30.23 Min.		
F	7.62	-0.15	+ 0.15
L	3.81		
M	11.43		
Eff. Parameters			
Ae mm ²	Amin mm ²	le mm	Ve mm ³
194.0	194.0	52.4	10200

INDUCTANCE

MARKING

AL value (nH/T ²)	Test conditions	FF43808EC PXXXXX
9490 ± 25%	10 kHz, < 0.5 mT, 25 °C	

CORE LOSSES

P _i max	Test conditions
< 2.09 W/set (< 205 mW/cm ³)	25 kHz, 200 mT, 100 °C

NOTE

Spec. modifications	Previous	Revised
2005-06-22	AL=10300±25% Losses: General F material	AL=9490±25% Losses: Detail as indicated