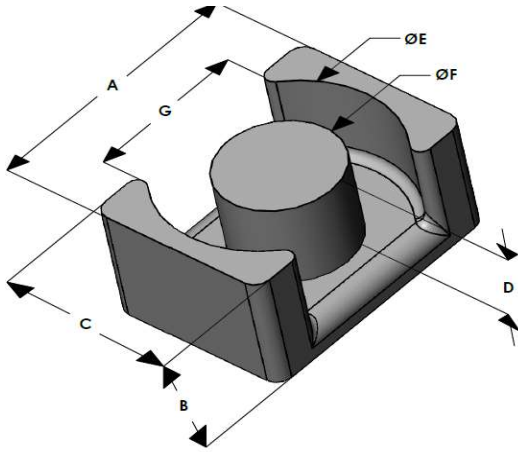




# EQX5032E075L200

110 Delta Drive  
 Pittsburgh, PA 15238  
 NAFTA Sales: (1)800-245-3984  
 HK Sales : (852)3102-9337  
 magnetics@spang.com  
 www.mag-inc.com



XFlux Permeability ( $\mu$ )	$A_L$ (nH/T <sup>2</sup> )	Core Marking	
		Lot Number	Part Number
75	271 $\pm$ 8%	XXXXXX	EQX5032E075L200

	Dimensions		Tolerance ( $\pm$ )		Packaging
	(mm)	(in)	(mm)	(in)	
<b>A</b>	50.00	1.968	0.60	0.024	Box Qty= 96 Pcs
<b>B</b>	20.00	0.787	0.40	0.016	
<b>C</b>	32.00	1.259	0.40	0.016	
<b>D</b>	14.50	0.571	0.40	0.016	Available Hardware
<b>E</b>	44.00	1.732	0.50	0.020	
<b>F</b>	20.00	0.787	0.30	0.012	
<b>G</b>					

Electrical Characteristics			Physical Characteristics					
Watt Loss @ 50kHz, 100mT max (mW/cm <sup>3</sup> )	DC Bias min (oersteds)		Break Strength typ (kg)	Window Area $W_a$ (mm <sup>2</sup> )	Cross Section $A_c$ (mm <sup>2</sup> )	Path Length $L_e$ (mm)	Volume $V_e$ (mm <sup>3</sup> )	Est. Weight (Ea. Piece) (g)
700	80%	50%	34	348	314	113	35,600	TBD
	65	110						

Note: Standard AL is controlled with full window high turns test coils. Application coils with few turns often result in lower inductance than expected, or sometimes higher.

Notes:	Temperature Rating
	Curie Temp: 700 °C

