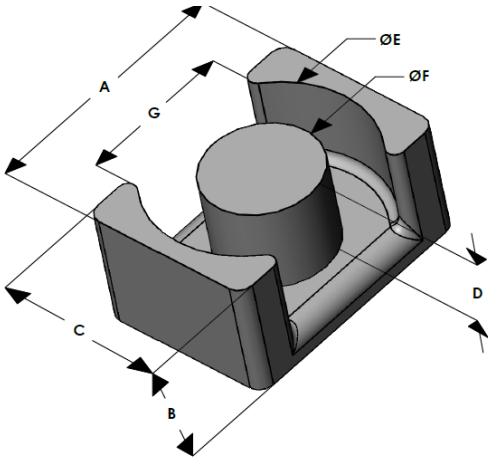




EQX5032E040L200

110 Delta Drive
 Pittsburgh, PA 15238
 NAFTA Sales: (1)800-245-3984
 HK Sales : (852)3102-9337
 magnetics@spang.com
 www.mag-inc.com



XFlux Permeability (μ)	A_L (nH/T ²)	Core Marking	
		Lot Number	Part number
40	139 ± 8%	XXXXXX	EQX5032E040L200

	Dimensions		Tolerance (\pm)			Packaging
	(mm)	(in)	(mm)	(in)		
A	50.00	1.969	0.60	0.024		Box qty: TBD
B	20.00	0.787	0.40	0.016		
C	32.00	1.260	0.40	0.016		
D	14.50	0.571			Typ.	Available Hardware
E	44.00	1.732	0.50	0.020		
F	20.00	0.787	0.30	0.012		
G						

Electrical Characteristics			Physical Characteristics					
Watt Loss @ 50 kHz, 100mT typical (mW/cm ³)	DC Bias typical (Oe)		Break Strength typical (kg)	Window Area W_A (mm ²)	Cross Section A_e (mm ²)	Path Length L_e (mm)	Volume V_e (mm ³)	Weight (Ea. Piece) (g)
300	80%	50%	34	348	314.1	113.4	35,600	113
	200	340						

Notes:	Temperature Rating
Rust-resistant process applied	Curie Temp: 700°C

