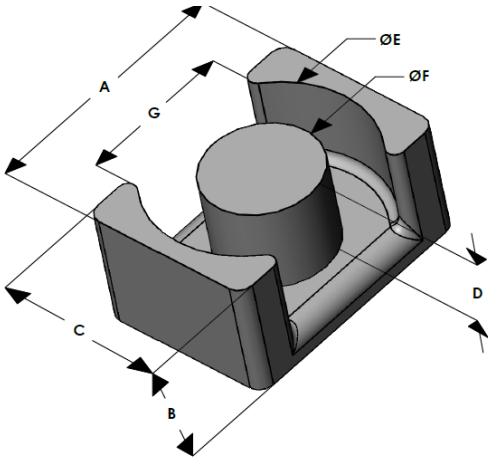




EQX2619E060L124

110 Delta Drive
 Pittsburgh, PA 15238
 NAFTA Sales: (1)800-245-3984
 HK Sales : (852)3102-9337
 magnetics@spang.com
 www.mag-inc.com



XFlux Permeability (μ)	A_L (nH/T ²)	Core Marking	
		Lot Number	Part number
60	141 ± 8%	XXXXXX	EQX2619E060L124

	Dimensions		Tolerance (\pm)			Packaging
	(mm)	(in)	(mm)	(in)		
A	26.50	1.043	0.30	0.012		250 pieces
B	12.40	0.488	0.15	0.006		
C	19.00	0.748	0.20	0.008		
D	9.10	0.358	0.15	0.006		Available Hardware
E	22.60	0.890	0.30	0.012		
F	12.00	0.472	0.20	0.008		
G	15.00	0.591	-	-	Min	

Electrical Characteristics			Physical Characteristics					
Watt Loss @ 50 kHz, 100mT typical (mW/cm ³)	DC Bias typical (Oe)		Break Strength typical (kg)	Window Area W_A (mm ²)	Cross Section A_e (mm ²)	Path Length L_e (mm)	Volume V_e (mm ³)	Weight (Ea. Piece) (g)
410	80%	50%	34	90.4	119.8	63.9	7,650	24.6
	115	190						

Notes:	Temperature Rating
	Curie Temp: 700°C

