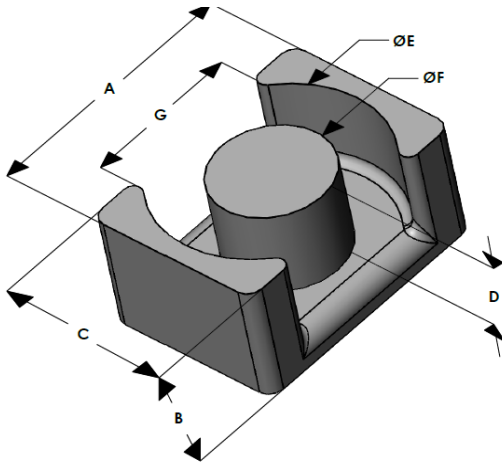




EQK5032E075L200

110 Delta Drive
 Pittsburgh, PA 15238
 NAFTA Sales: (1)800-245-3984
 HK Sales : (852)3102-9337
 magnetics@spang.com
 www.mag-inc.com



Kool M μ Permeability (μ)	A _L (nH/T ²)	Core Marking	
		Lot Number	Part Number
75	271 ± 8%	XXXXXX	EQK5032E075L200

	Dimensions		Tolerance (±)			Packaging
	(mm)	(in)	(mm)	(in)		
A	50.00	1.969	0.60	0.024		Box Qty = 96 Pcs
B	20.00	0.787	0.40	0.016		
C	32.00	1.260	0.40	0.016		
D	14.50	0.571	0.20	0.008		Available Hardware
E	44.00	1.732	0.50	0.020		None
F	20.00	0.787	0.30	0.012		
G	33.00	1.299	-	-	min	

Electrical Characteristics			Physical Characteristics					
Watt Loss @ 100 kHz, 100mT max (mW/cm ³)	DC Bias min (oersteds)		Break Strength min (kg)	Window Area W _a (mm ²)	Cross Section A _e (mm ²)	Path Length L _e (mm)	Volume V _e (mm ³)	Est. Weight (Ea. Piece) (g)
	80%	50%						
700	15	40	79	348	314.1	113.4	35,600	96

Note: Standard A_L is controlled with full window high turns test coils. Application coils with few turns often result in lower inductance than expected, or sometimes higher.

Notes:	Temperature Rating
	Curie Temp: 500 °C

