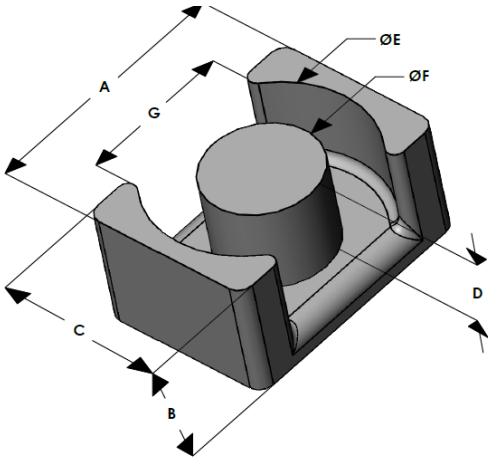




# EQH3222E040L101

110 Delta Drive  
 Pittsburgh, PA 15238  
 NAFTA Sales: (1)800-245-3984  
 HK Sales : (852)3102-9337  
 magnetics@spang.com  
 www.mag-inc.com



High Flux Permeability ( $\mu$ )	$A_L$ (nH/T <sup>2</sup> )	Core Marking	
		Lot Number	Part number
40	129 ± 8%	XXXXXX	EQH3222E040L101

	Dimensions		Tolerance ( $\pm$ )		Packaging
	(mm)	(in)	(mm)	(in)	
A	32.00	1.260	0.30	0.012	Box qty: 240 pcs
B	10.10	0.398	0.20	0.008	
C	22.00	0.866	0.30	0.012	
D	6.40	0.252	0.20	0.008	Available Hardware
E	27.60	1.087	0.30	0.012	
F	13.50	0.531	0.20	0.008	
G	20.43	0.804		Min	

Electrical Characteristics			Physical Characteristics					
Watt Loss @ 50 kHz, 100mT typical (mW/cm <sup>3</sup> )	DC Bias typical (Oe)		Break Strength typical (kg)	Window Area $W_A$ (mm <sup>2</sup> )	Cross Section $A_e$ (mm <sup>2</sup> )	Path Length $L_e$ (mm)	Volume $V_e$ (mm <sup>3</sup> )	Weight (Ea. Piece) (g)
230	80%	50%	61	45.12	152.3	59.5	9100	31.7
	170	300						

Notes:	Temperature Rating
	Curie Temp: 500°C

