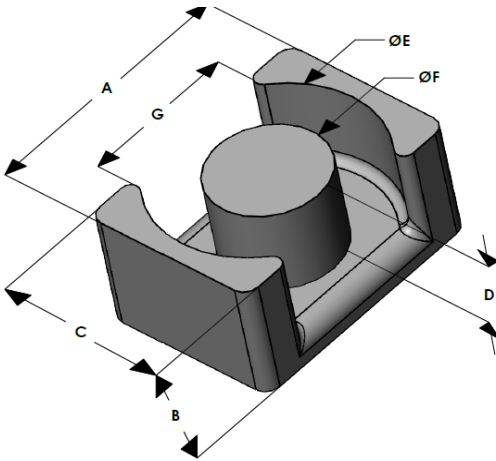




EQG3626E075L174

110 Delta Drive
 Pittsburgh, PA 15238
 NAFTA Sales: (1)800-245-3984
 HK Sales : (852)3102-9337
 magnetics@spang.com
 www.mag-inc.com



Edge Permeability (μ)	A_L (nH/T ²)	Core Marking	
		Lot Number	Part Number
75	187 ± 8%	XXXXXX	EQG3626E075L174

	Dimensions		Tolerance (\pm)			Packaging
	(mm)	(in)	(mm)	(in)		
A	36.00	1.417	0.40	0.016		Box Qty = 240 Pcs
B	17.40	0.685	0.20	0.008		
C	26.00	1.024	0.30	0.012		
D	13.40	0.528	0.20	0.008		Available Hardware
E	32.00	1.260	0.30	0.012		None
F	14.40	0.567	0.20	0.008		
G	22.00	0.866	-	-	min	

Electrical Characteristics			Physical Characteristics					
Watt Loss @ 100 kHz, 100mT max (mW/cm ³)	DC Bias min (oersteds)		Break Strength min (kg)	Window Area W_a (mm ²)	Cross Section A_e (mm ²)	Path Length L_e (mm)	Volume V_e (mm ³)	Est. Weight (Ea. Piece) (g)
	80%	50%						
550	75	115	47	235	180.8	94.7	17,100	64

Note: Standard A_L is controlled with full window high turns test coils. Application coils with few turns often result in lower inductance than expected, or sometimes higher.

Notes:	Temperature Rating
	Curie Temp: 500 °C

