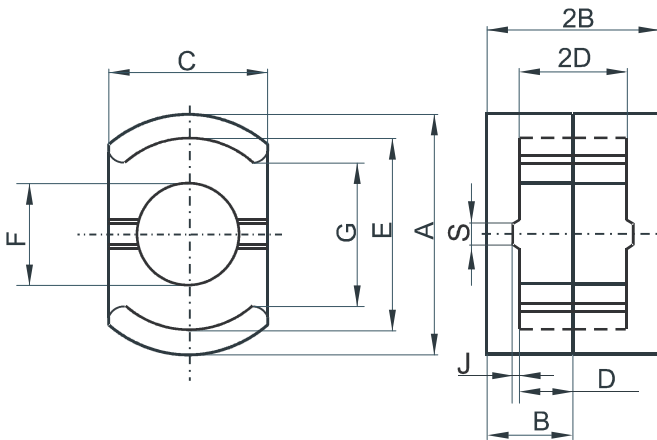


DIMENSIONS



(mm)	Nominal:	Tol. min.:	Tol. max.:
A	42.4	-0.71	+ 0.71
B	14.8	-0.2	+ 0.2
2B	29.6	-0.4	+ 0.4
C	28.4 Nom.		
D	10.21 Min.		
2D	20.42 Min.		
E	35.61 Min.		
F	17.7 Max.		
G	25.0 Min.		
J	1.1 Ref.		
S	5.03 Ref.		
Eff. Parameters			
Ae mm²	Amin mm²	le mm	Ve mm³
232.0	211	76.0	17600

INDUCTANCE

MARKING

AL value (nH/T ²)	Test conditions
Nom: 7000 Min.: 5250	10 kHz, < 0.5 mT, 25 °C

DP44229UG PXXXXX

CORE LOSSES

P _i max	Test conditions
< 2.02 W/set (< 115 mW/cm ³)	100 kHz, 100 mT, 100 °C

NOTE

Spec. modifications	Previous	Revised
2005-06-22	Losses: General P material	Losses: Detail as indicated