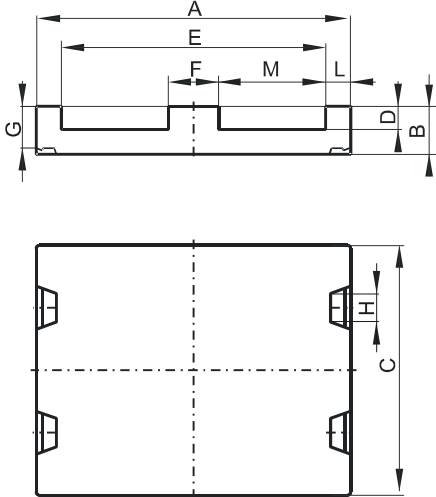


Specification for:

CR46410EC

110 Delta Drive
Pittsburgh, PA 15238
Phone: 412/696-1333
Fax: 412/696-0333
Email: magnetics@spang.com

DIMENSIONS



(mm)	Nominal:	Tol. min.:	Tol. max.:
A	64.0	-0.76	+ 0.76
B	10.2	-0.1	+ 0.1
C	50.8	-0.81	+ 0.81
D	5.03 Min.		
E	53.16 Min.		
F	10.16	-0.18	+ 0.18
G	8.86 Ref.		
H	5.15 Ref.		
L	5.08	-0.12	+ 0.12
M	21.8	-0.25	+ 0.25
Eff. Parameters			
Ae mm²	Amin mm²	le mm	Ve mm³
516.0	516.0	80.2	41400

INDUCTANCE

AL value (nH)	Test conditions
Nom: 14618 Min.: 10964	10 kHz, < 0.5 mT, 25 °C

MARKING

CR46410EC
PXXXXX

CORE LOSSES

P_i max	Test conditions
87 mW/cm ³ (3.6 W/set)	100 kHz, 100 mT, 100 °C
614 mW/cm ³ (25 W/set)	100 kHz, 200 mT, 100 °C

NOTE

Spec. modifications	Previous	Revised
2005-06-22	AL=11100 Min. AL=14800 Nom. M=21.59 Min. Losses: General R material	AL=10964 Min. AL=14618 Nom. M=21.55 Min. Losses: Detail as indicated