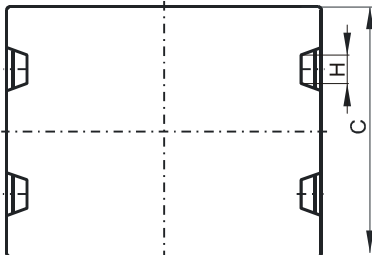
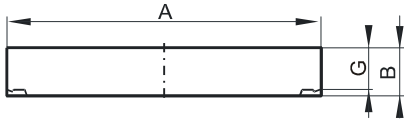


DIMENSIONS



(mm)	Nominal:	Tol. min.:	Tol. max.:
A	58.42	-1.2	+ 1.2
B	4.06	-0.13	+ 0.13
C	38.1	-0.8	+ 0.8
G	2.81 Ref.		
H	5.15 Ref.		
Eff. Parameters (with C_45810EC)			
Ae mm²	Amin mm²	le mm	Ve mm³
305	281	68.3	20829

INDUCTANCE

MARKING

AL value (nH/T²)	Test conditions (with CR45810EC)	CR45810IC PXXXXX
Nom: 9821 Min.: 7366	10 kHz, < 0.5 mT, 25 °C	

CORE LOSSES

P_i max	Test conditions
< 2.0 W/set (< 97 mW/cm ³)	100 kHz, 100 mT, 100 °C
< 13 W/set (< 625 mW/cm ³)	100 kHz, 200 mT, 100 °C

NOTE

Spec. modifications	Previous	Revised
2005-06-22	Al=7210 Min. B=4.04±0.13 Losses: General R material	Al=7366 Min. B=4.06±0.13 Losses: Detail as indicated