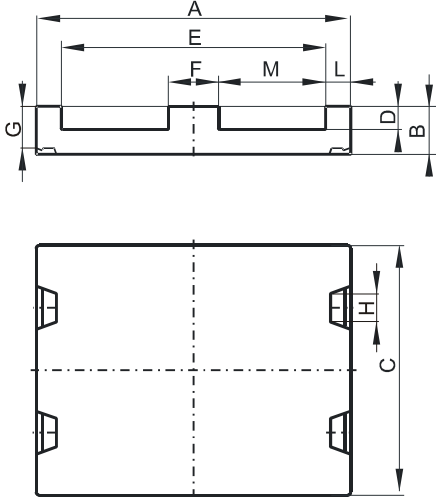


Specification for:

CR45810EC

110 Delta Drive
Pittsburgh, PA 15238
Phone: 412/696-1333
Fax: 412/696-0333
Email: magnetics@spang.com

DIMENSIONS



(mm)	Nominal:	Tol. min.:	Tol. max.:
A	58.42	-1.2	+ 1.2
B	10.54	-0.2	+ 0.2
C	38.1	-0.8	+ 0.8
D	6.35 Min.		
E	50.0 Min.		
F	8.1	-0.2	+ 0.2
L	3.7 Ref.		
M	21.4 Ref.		
Eff. Parameters			
Ae mm ²	Amin mm ²	le mm	Ve mm ³
308	308	80.6	24600

INDUCTANCE

AL value (nH)	Test conditions
Nom: 8498 Min.: 6374	10 kHz, < 0.5 mT, 25 °C

MARKING

CR45810EC PXXXXX

CORE LOSSES

P _i max	Test conditions
98 mW/cm ³ (2.4 W/set)	100 kHz, 100 mT, 100 °C
609 mW/cm ³ (15 W/set)	100 kHz, 200 mT, 100 °C

NOTE

Spec. modifications	Previous	Revised
2005-06-22	E=50.39 Min. Losses: General R material	E=50.0 Min. Losses: Detail as indicated