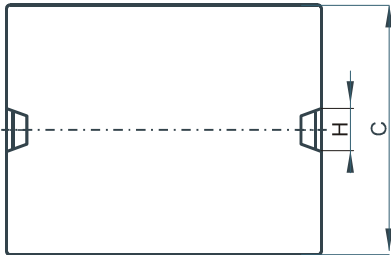
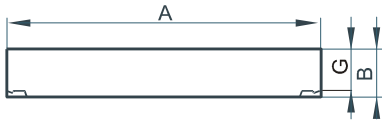


DIMENSIONS



(mm)	Nominal:	Tol. min.:	Tol. max.:
A	31.75	-0.64	+ 0.64
B	3.18	-0.13	+ 0.13
C	20.32	-0.41	+ 0.41
G	2.13	-0.2	+ 0.2
H	5.0	0.0	+ 0.2
Eff. Parameters (with C_43208EC)			
Ae mm²	Amin mm²	le mm	Ve mm³
130.0	130.0	35.1	4560

INDUCTANCE

MARKING

AL value (nH/T²)	Test conditions (with CR43208EC)
Nom: 7321 Min.: 5491	10 kHz, < 0.5 mT, 25 °C

CR43208IC PXXXXX

CORE LOSSES

P_i max	Test conditions
< 0.41 W/set (< 90 mW/cm ³)	100 kHz, 100 mT, 100 °C
< 2.9 W/set (< 636 mW/cm ³)	100 kHz, 200 mT, 100 °C