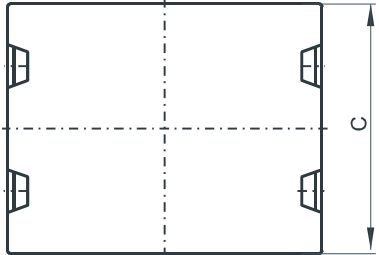


Specification for:

CP46410IC

110 Delta Drive
Pittsburgh, PA 15238
Phone: 412/696-1333
Fax: 412/696-0333
Email: magnetics@spang.com

DIMENSIONS



(mm)	Nominal:	Tol. min.:	Tol. max.:
A	64.01	-1.27	+ 1.27
B	5.08	-0.13	+ 0.13
C	50.8	-1.02	+ 1.02
Eff. Parameters (with C_46410EC)			
Ae mm²	Amin mm²	le mm	Ve mm³
511.0	511.0	69.9	35539

INDUCTANCE

MARKING

AL value (nH/T²)	Test conditions (with CP46410EC)	CP46410IC PXXXXX
Nom: 17189 Min.: 12892	10 kHz, < 0.5 mT, 25 °C	

CORE LOSSES

P_i max	Test conditions
< 4.2 W/set (< 116 mW/cm ³)	100 kHz, 100 mT, 100 °C

NOTE

Spec. modifications	Previous	Revised
2005-06-22	A=64.0±0.76 AL=13900 Min. AL=18533 Nom. C=50.8±0.81 Losses: General P material	A=64.01±1.27 AL=12892 Min. AL=17189 Nom. C=50.8±1.02 Losses: Detail as indicated