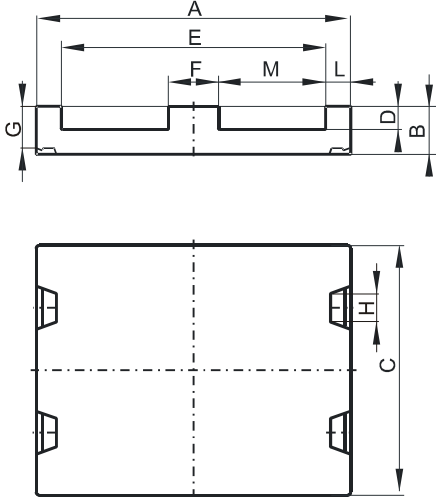


Specification for:

## CP46410EC

110 Delta Drive  
Pittsburgh, PA 15238  
Phone: 412/696-1333  
Fax: 412/696-0333  
Email: magnetics@spang.com

### DIMENSIONS



(mm)	Nominal:	Tol. min.:	Tol. max.:
<b>A</b>	64.0	-0.76	+ 0.76
<b>B</b>	10.2	-0.1	+ 0.1
<b>C</b>	50.8	-0.81	+ 0.81
<b>D</b>	5.03 Min.		
<b>E</b>	53.16 Min.		
<b>F</b>	10.16	-0.18	+ 0.18
<b>G</b>	8.86 Ref.		
<b>H</b>	5.15 Ref.		
<b>L</b>	5.08	-0.12	+ 0.12
<b>M</b>	21.8	-0.25	+ 0.25
Eff. Parameters			
<b>Ae mm<sup>2</sup></b>	<b>Amin mm<sup>2</sup></b>	<b>le mm</b>	<b>Ve mm<sup>3</sup></b>
516.0	516.0	80.2	41400

### INDUCTANCE

AL value (nH)	Test conditions
Nom: 15599 Min.: 11699	10 kHz, < 0.5 mT, 25 °C

### MARKING

CP46410EC PXXXXX
---------------------

### CORE LOSSES

P <sub>i</sub> max	Test conditions
116 mW/cm <sup>3</sup> (4.8 W/set)	100 kHz, 100 mT, 100 °C

### NOTE

Spec. modifications	Previous	Revised
2005-06-22	AL=12100 Min. AL=16133 Nom. M=21.59 Min. Losses: General P material	AL=11699 Min. AL=15599 Nom. M=21.55 Min. Losses: Detail as indicated