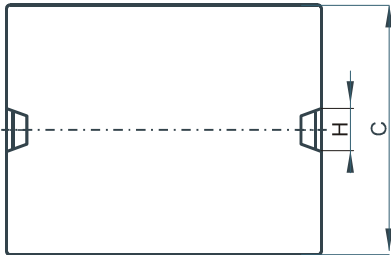
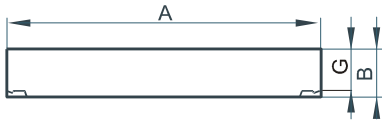


**DIMENSIONS**



(mm)	Nominal:	Tol. min.:	Tol. max.:
<b>A</b>	31.75	-0.64	+ 0.64
<b>B</b>	3.18	-0.13	+ 0.13
<b>C</b>	20.32	-0.41	+ 0.41
<b>G</b>	2.13	-0.2	+ 0.2
<b>H</b>	5.0	0.0	+ 0.2
<b>Eff. Parameters</b> (with C_43208EC)			
<b>Ae mm<sup>2</sup></b>	<b>Amin mm<sup>2</sup></b>	<b>le mm</b>	<b>Ve mm<sup>3</sup></b>
130.0	130.0	35.1	4560

**INDUCTANCE**

**MARKING**

<b>AL value (nH/T<sup>2</sup>)</b>	<b>Test conditions (with CP43208EC)</b>
Nom: 7745 Min.: 5809	10 kHz, < 0.5 mT, 25 °C

CP43208IC PXXXXX
---------------------

**CORE LOSSES**

<b>P<sub>i</sub> max</b>	<b>Test conditions</b>
< 0.55 W/set (< 121 mW/cm <sup>3</sup> )	100 kHz, 100 mT, 100 °C