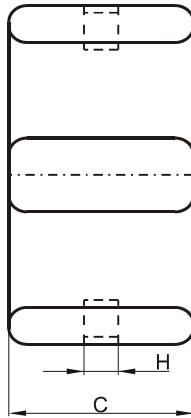
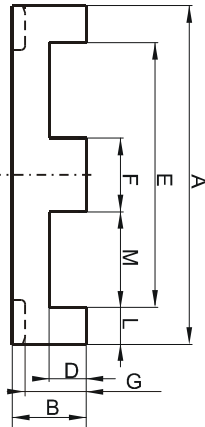


Specification for:

**CP41805EC**

110 Delta Drive  
Pittsburgh, PA 15238  
Phone: 412/696-1333  
Fax: 412/696-0333  
Email: magnetics@spang.com

**DIMENSIONS**



(mm)	Nominal:	Tol. min.:	Tol. max.:
<b>A</b>	18.0	-0.35	+ 0.35
<b>B</b>	4.0	-0.1	+ 0.1
<b>C</b>	10.0	-0.2	+ 0.2
<b>D</b>	2.0	-0.1	+ 0.1
<b>E</b>	14.0	-0.3	+ 0.3
<b>F</b>	4.0	-0.1	+ 0.1
<b>G</b>	3.3	-0.15	+ 0.15
<b>H</b>	2.5	0.0	+ 0.2
<b>L</b>	2.0		
<b>M</b>	5.0		
Eff. Parameters			
<b>Ae mm<sup>2</sup></b>	<b>Amin mm<sup>2</sup></b>	<b>le mm</b>	<b>Ve mm<sup>3</sup></b>
40.1	39.9	24.2	972

**INDUCTANCE**

AL value (nH)	Test conditions
Nom: 3430 Min.: 2573	10 kHz, < 0.5 mT, 25 °C

**MARKING**

P EC
---------

**CORE LOSSES**

P <sub>i</sub> max	Test conditions
108 mW/cm <sup>3</sup> (0.105 W/set)	100 kHz, 100 mT, 100 °C

**NOTE**

Spec. modifications	Previous	Revised
2005-06-16	AL=2740 Min. B=4.09 Max. F=4.09 Max. L=2.0±0.1 M=5.0±015 Losses: General P material	AL=2573 Min. B=4.1 Max. F=4.1 Max. L=2.0 Ref. M=5.0 Ref. Losses: Detail as indicated