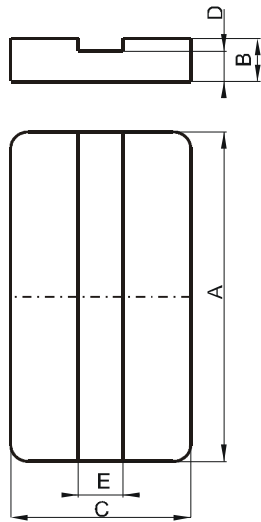


Specification for:

CL41805IC

110 Delta Drive
Pittsburgh, PA 15238
Phone: 412/696-1333
Fax: 412/696-0333
Email: magnetics@spang.com

DIMENSIONS



(mm)	Nominal:	Tol. min.:	Tol. max.:
A	18.0	-0.35	+ 0.35
B	2.4	-0.05	+ 0.05
C	10.0	-0.2	+ 0.2
D	2.0	-0.1	+ 0.1
E	2.5	0.0	+ 0.2
Eff. Parameters (with C_41805EC)			
Ae mm²	Amin mm²	le mm	Ve mm³
39.5	35.9	20.3	830

INDUCTANCE

AL value (nH/T ²)	Test conditions (with CL41805EC)
1800 ± 25%	10 kHz, < 0.5 mT, 25 °C

MARKING

No marking

CORE LOSSES

P _i max	Test conditions
229 mW/cm ³ (0.19 W/set)	1000 kHz, 30 mT, 100 °C
Ref. 400 mW/cm ³ (0.33 W/set)	3000 kHz, 10 mT, 100 °C