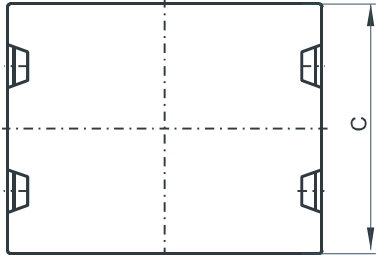
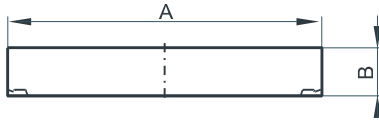


Specification for:

CF46410IC

110 Delta Drive
Pittsburgh, PA 15238
Phone: 412/696-1333
Fax: 412/696-0333
Email:magnetics@spang.com

DIMENSIONS



(mm)	Nominal:	Tol. min.:	Tol. max.:
A	64.01	-1.27	+ 1.27
B	5.08	-0.13	+ 0.13
C	50.8	-1.02	+ 1.02
Eff. Parameters (with C_46410EC)			
Ae mm²	Amin mm²	le mm	Ve mm³
511.0	511.0	69.9	35539

INDUCTANCE

MARKING

AL value (nH/T ²)	Test conditions (with CF46410EC)	CF46410IC PXXXXX
19639 ± 25%	10 kHz, < 0.5 mT, 25 °C	

CORE LOSSES

P _i max	Test conditions
205 mW/cm ³ (7.3 W/set)	25 kHz, 200 mT, 100 °C

NOTE

Spec. modifications	Previous	Revised
2005-06-22	AL=22200±25% A=64.0±0.76 C=50.8±0.81 Losses: General F material	AL=19639±25% A=64.01±1.27 C=50.8±1.02 Losses: Detail as indicated