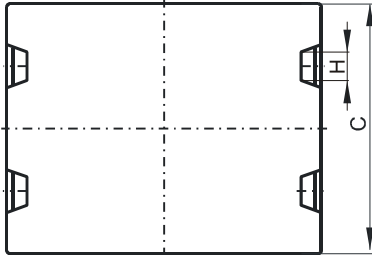
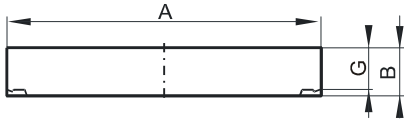


**DIMENSIONS**



(mm)	Nominal:	Tol. min.:	Tol. max.:
<b>A</b>	58.42	-1.2	+ 1.2
<b>B</b>	4.06	-0.13	+ 0.13
<b>C</b>	38.1	-0.8	+ 0.8
<b>G</b>	2.81 Ref.		
<b>H</b>	5.15 Ref.		
<b>Eff. Parameters</b> (with C_45810EC)			
<b>Ae mm<sup>2</sup></b>	<b>Amin mm<sup>2</sup></b>	<b>le mm</b>	<b>Ve mm<sup>3</sup></b>
305	281	68.3	20829

**INDUCTANCE**

**MARKING**

<b>AL value (nH/T<sup>2</sup>)</b>	<b>Test conditions (with CF45810EC)</b>	<b>CF45810IC PXXXXX</b>
11941 ± 25%	10 kHz, < 0.5 mT, 25 °C	

**CORE LOSSES**

<b>P<sub>i</sub> max</b>	<b>Test conditions</b>
< 4.2 W/set (< 203 mW/cm <sup>3</sup> )	25 kHz, 200 mT, 100 °C

**NOTE**

<b>Spec. modifications</b>	<b>Previous</b>	<b>Revised</b>
2005-06-22	AL=12500±25% B=4.04±0.13 Losses: General F material	AL=11941±25% B=4.06±0.13 Losses: Detail as indicated