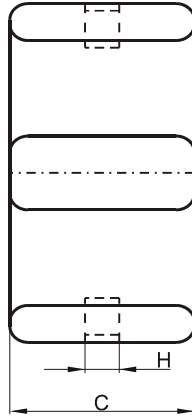
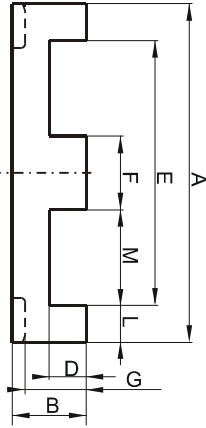


Specification for:

CF41805EC

110 Delta Drive
Pittsburgh, PA 15238
Phone: 412/696-1333
Fax: 412/696-0333
Email: magnetics@spang.com

DIMENSIONS



(mm)	Nominal:	Tol. min.:	Tol. max.:
A	18.0	-0.35	+ 0.35
B	4.0	-0.1	+ 0.1
C	10.0	-0.2	+ 0.2
D	2.0	-0.1	+ 0.1
E	14.0	-0.3	+ 0.3
F	4.0	-0.1	+ 0.1
G	3.3	-0.15	+ 0.15
H	2.5	0.0	+ 0.2
L	2.0		
M	5.0		
Eff. Parameters			
Ae mm²	Amin mm²	le mm	Ve mm³
40.1	39.9	24.2	972

INDUCTANCE

AL value (nH)	Test conditions
3853 ± 25%	10 kHz, < 0.5 mT, 25 °C

MARKING

F EC

CORE LOSSES

P _i max	Test conditions
206 mW/cm ³ (0.20 W/set)	25 kHz, 200 mT, 100 °C

NOTE

Spec. modifications	Previous	Revised
2005-06-16	Al=4380±25% B=4.09 Max. F=4.09 Max. L=2.0±0.1 M=5.0±015 Losses: General F material	Al=3853±25% B=4.1 Max. F=4.1 Max. L=2.0 Ref. M=5.0 Ref. Losses: Detail as indicated