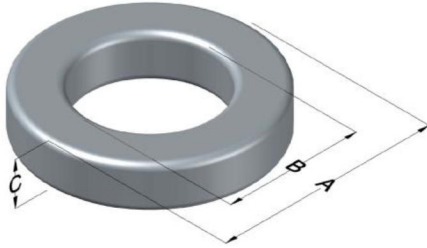




# C058894A2HT15

110 Delta Drive  
 Pittsburgh, PA 15238  
 NAFTA Sales: (1)800-245-3984  
 HK Sales : (852)3102-9337  
 magnetics@spang.com  
 www.mag-inc.com



High Flux Permeability ( $\mu$ )	$A_L$ (nH/T <sup>2</sup> )	Core Marking			Coating Color
		Lot Number	Part Number	Inductance Grade	
60	94 ± 8%	XXXXXX	58894A2HT15	X	Khaki

Dimensions	Uncoated		Coated Limits			Packaging
	(mm)	(in)	(mm)	(in)		
OD (A)	26.92	1.060	27.69	1.090	max	Cardboard cut-outs Box Qty= 320 pcs
ID (B)	14.73	0.580	14.10	0.555	min	
HT (C)	14	0.551	15	0.590	max	

Electrical Characteristics			Physical Characteristics						
Watt Loss @ 100 kHz, 100mT max (mW/cm <sup>3</sup> )	DC Bias min (oersteds)		Voltage Breakdown wire to wire min (V <sub>AC</sub> )	Break Strength min (kg)	Window Area W <sub>A</sub> (mm <sup>2</sup> )	Cross Section A <sub>e</sub> (mm <sup>2</sup> )	Path Length L <sub>e</sub> (mm)	Volume V <sub>e</sub> (mm <sup>3</sup> )	Weight (g)
	80%	50%							
900	90	170	3000	77.0	156	82.1	63.5	5210	40

Winding Information					Temperature Rating	
Winding Length Per Turn				Wound Coil Dimensions (mm)		Curie Temp: 500°C
Winding Factor	(mm)	Winding Factor	(mm)	40% Winding Factor		Coating Temp (Continuous up to): 200°C
				OD	30.0	
				HT	19.5	Notes:
				Max OD	37.3	
				Max HT	27.0	
0%	43.6	40%	50.8	Completely Full Window		
20%	47.1	45%	51.8	Surface Area (mm <sup>2</sup> )		
25%	48.0	50%	52.7			
30%	48.9	60%	54.9	Unwound Core		2,900
35%	49.8	70%	57.4	40% Winding Factor		4,100

