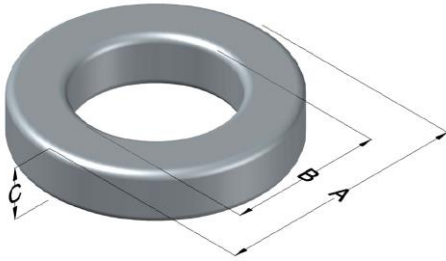




# C058351A2

110 Delta Drive  
 Pittsburgh, PA 15238  
 NAFTA Sales: (1)800-245-3984  
 HK Sales : (852)3102-9337  
 magnetics@spang.com  
 www.mag-inc.com



High Flux Permeability ( $\mu$ )	$A_L$ (nH/T <sup>2</sup> )	Core Marking			Coating Color
		Lot Number	Part Number	Inductance Grade	
60	51 ± 8%	XXXXXX	58351A2	X	Khaki

Dimensions	Uncoated		Coated Limits			Packaging
	(mm)	(in)	(mm)	(in)		
OD (A)	23.57	0.928	24.33	0.958	max	Bulk Pack 4 bags/box Box Qty= 720 pcs
ID (B)	14.40	0.567	13.77	0.542	min	
HT (C)	8.89	0.350	9.65	0.380	max	

Electrical Characteristics			Physical Characteristics						
Watt Loss @ 100 kHz, 100mT max (mW/cm <sup>3</sup> )	DC Bias min (oersteds)		Voltage Breakdown wire to wire min (V <sub>AC</sub> )	Break Strength min (kg)	Window Area W <sub>A</sub> (mm <sup>2</sup> )	Cross Section A <sub>e</sub> (mm <sup>2</sup> )	Path Length L <sub>e</sub> (mm)	Volume V <sub>e</sub> (mm <sup>3</sup> )	Weight (g)
	80%	50%							
900	90.0	170	2000	47.0	149	38.8	58.8	2,280	18

Winding Information					Temperature Rating	
Winding Length Per Turn				Wound Coil Dimensions (mm)		Curie Temp: 500°C
Winding Factor	(mm)	Winding Factor	(mm)	40% Winding Factor		Coating Temp (Continuous up to): 200°C
				OD	26.7	Notes:
				HT	14.2	
				Completely Full Window		
				Max OD	33.5	
				Max HT	21.4	
				Surface Area (mm <sup>2</sup> )		
				Unwound Core		1,800
				40% Winding Factor		2,700

