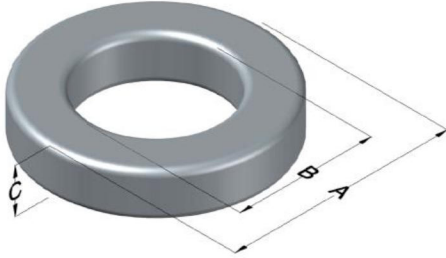




C058252A2

110 Delta Drive
 Pittsburgh, PA 15238
 NAFTA Sales: (1)800-245-3984
 HK Sales : (852)3102-9337
 magnetics@spang.com
 www.mag-inc.com



High Flux Permeability (μ)	A_L (nH/T ²)	Core Marking			Coating Color
		Lot Number	Part Number	Inductance Grade	
160	215 ± 8%	XXXXXX	58252A2	X	Khaki

Dimensions	Uncoated		Coated Limits			Packaging
	(mm)	(in)	(mm)	(in)		
OD (A)	39.88	1.570	40.77	1.605	max	Cardboard cut-outs Box Qty= 180 pcs
ID (B)	24.13	0.950	23.32	0.918	min	
HT (C)	14.48	0.570	15.37	0.605	max	

Electrical Characteristics			Physical Characteristics						
Watt Loss @ 100 kHz, 100mT Max (mW/cm ³)	DC Bias min (oersteds)		Voltage Breakdown wire to wire min (V _{AC})	Break Strength min (kg)	Window Area W _A (mm ²)	Cross Section A _e (mm ²)	Path Length L _e (mm)	Volume V _e (mm ³)	Weight (g)
	80%	50%							
1500	32	60	3000	126	427	107	98.4	10,600	89

Winding Information					Temperature Rating	
Winding Length Per Turn				Wound Coil Dimensions (mm)		Curie Temp: 500°C
Winding Factor	(mm)	Winding Factor	(mm)	40% Winding Factor		Coating Temp (Continuous up to): 200°C
				OD	44.3	Notes:
0%	48.2	40%	60.2	HT	22.4	
				Max OD	56.4	
20%	54.3	45%	62.1	Max HT	35.2	
25%	55.8	50%	63.7	Surface Area (mm ²)		
30%	57.0	60%	67.3	Unwound Core	4,800	
35%	58.8	70%	71.5	40% Winding Factor	7,300	

